

IMPORTANT THINGS TO KNOW



OUR PRODUCT RANGE - METAL WORK

HOW TO PAINT METAL WORK



Always follow the instructions on the product label for best results.



Preparation and correct product application are important.



There are no short-cuts. Always follow the correct drying time recommendations.



Keep the room well ventilated when using an oil-based/solvent based paint.

HANDY PAINTING TIPS



Clean your equipment used for PVA with soapy water after use. Work the bristles with your hand.



Clean your equipment used for oil-based paint with Mineral Turpentine after use.



Use correct safety equipment for your own protection e.g. safety glasses, gloves and protective clothing.



For technical questions, please phone our technical helpline for support.
Tel: +264 61 384 724

PRODUCT NAME		WATER-BASED				OIL-BASED		
		NEO DUR ACRYLIC PVA	NEO MULTI DUR PVA	AURORA	NEO GLOSS ACRYLIC	NEO DUR HIGH GLOSS	NEO DUR EGG-SHELL	NEO SILK
AREAS	INTERIOR	X	X	X	X	X	X	X
	EXTERIOR	X	X	X	X	X		
FINISH	HIGH-GLOSS				X	X		
	SILKY SHEEN						X	X
	SEMI-MAT	X						
	MATT		X	X				
SURFACE	CEILINGS	X	X	X	X	X	X	X
	CONCRETE	X	X	X	X	X	X	X
	DOORS	X			X	X	X	X
	FIBRE CEMENT	X	X	X	X	X	X	X
	FURNITURE				X	X	X	X
	HARDBOARD	X	X	X	X	X	X	X
	METAL	PRIMED	PRIMED		PRIMED	PRIMED	PRIMED	PRIMED
	WALLS	PRIMED	PRIMED	PRIMED	PRIMED	PRIMED	PRIMED	PRIMED
SABS GRADE	WOOD FRAMES	PRIMED	PRIMED		PRIMED	PRIMED	PRIMED	PRIMED
	1	X						
	2		X			X		

Technical helpline: Tel: +264 61 384 724

WINDHOEK HEAD OFFICE
12 Bell Street, Southern Industry, Windhoek
T: +264 61 384 700

WALVIS BAY REGIONAL OFFICE
Hanna Mupatani Road, Walvis Bay
T: +264 64 204 026

www.neopaints.com /NEOpaintsNamibia

PA!NTNAM!B!A

HANDY TIPS ON HOW TO PAINT METAL SURFACES AND WHICH PRODUCTS TO USE





Painting metal surfaces might seem difficult, but by using the correct tools and products, it's easy to achieve great results.

A coat of excellence



1

Sand previously painted surfaces to matt and remove all the rust.

THINGS YOU WILL NEED

Hamilton's Wet or Dry Paper Sheets



2

Make sure the metal surface is dry and free from dust, oil and chemicals.

For dust, swipe with a clean cloth – do not wash.

For oil, fat or grease contamination scrub down with **NEO Metal Conditioner**.

Allow to react for 15 min and rinse properly with a soft nylon brush and clean water.

THINGS YOU WILL NEED

Hamilton's Professional 75mm



3

Within 30 min to 1 hour after cleaning, apply one generous coat of **NEO Corrotec** by means of a brush or spray application. In coastal conditions, 2 coats of **NEO Corrotec** are required.

If the surface was previously painted only the bare spots need to be painted.

THINGS YOU WILL NEED

Hamilton's Professional 25mm



4

Apply one coat **NEO Universal Undercoat** over entire surface and let dry for 6 hours.

THINGS YOU WILL NEED

Hamilton's Professional 50mm



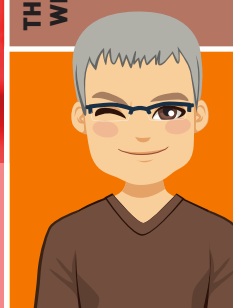
5

Finish with 2 coats of any NEO Finishing paints of your choice.

Choose from NEO Dur, NEO Multi Dur or Aurora; Or NEO High Gloss and NEO Silk enamel finishing paints.

THINGS YOU WILL NEED

Hamilton's Specialist 3x10 Brush



finish

MORE HANDY TOOLS



Wire brush



Masking tape



Scraper



Sand paper



Paint Roller



Paint Brush